

TABLE OF CONTENTS

Click story below to go directly to it.

[Living Traditions Festival](#)

[Spring Exhibits](#)

[Like us on Facebook](#)

[Guest Writers Series](#)

[Christensen and Chun Exhibit](#)

[Boskoff says Farewell](#)

[Public Art News](#)

[Message from Arts Council Board](#)

[Welcome New Executive Director](#)

[Grants Applications Available](#)

[Applications Due in March](#)

[Calendar](#)

2012 Living Traditions Festival Returns to Celebrate Our Cultural Diversity



The Salt Lake City Arts Council presents the twenty-seventh annual Living Traditions Festival on **May 18, 19 and 20** at the Salt Lake City & County Building. A community celebration of Salt Lake's rich cultural diversity, the Living Traditions Festival focuses on the traditional music, dance, crafts and food at the heart of all ethnic communities living here today. The festival schedule is: **Friday, May 18, from 5:00 to 10:00 p.m.; Saturday, May 19, from noon to 10:00 p.m. and Sunday, May 20, from noon to 7:00 p.m.**



This year, Living Traditions welcomes special guest artist **Bettye LaVette**. She is one of the great soul singers in American music history, possessed with an incredibly expressive voice that one moment exude a formidable level of strength and intensity and the next appears vulnerable and reflective. LaVette was born in Muskegon, Michigan and moved to Detroit when she was 6. Her parents sold corn liquor and her living room was oft-times visited by The Soul Stirrers, The Blind Boys of Mississippi and many other traveling gospel groups of the day shaping her musical direction. LaVette has been recording for over four decades, but up to a few years ago she has remained relatively unknown. "Bettye LaVette, rivals Aretha Franklin as her generation's most vital soul singer." *—The New York Times*.

At the **Festival Main Stages**, performers of all ages and backgrounds gain the spotlight presenting traditional songs and dances of their respective communities. From traditional Salvadorian folk dancing to Sudanese DiDinga dancing and drumming, to Celtic,

Spring Exhibits: Mixed Media, Sculpture and Photography

Mixed media work by Roldan Din, sculptures by Bryon Draper and photographs by members of Salt Lake Seven will be exhibited in the Art Barn's Finch Lane Gallery commencing in early March. The artists' reception is scheduled for **Friday, March 9, from 6:00 to 8:00 p.m.** The shows continue through April 27 and are open for the monthly gallery strolls on March 16 and April 20, 6:00 to 9:00 p.m.

... continued on page 2

... continued on page 2

continued from page 1...

Roldan Din's mixed media work focuses on change. "I try to capture transitions unconsciously by creating tangible pieces over periods of time," he says, "and my works are impulses of the moments I am in. I feel that collectively they are layers of time passing and of movements from one state to another." With this in mind, he will be exhibiting works from various periods from 2006 to the present.

Din's first paintings, produced in Seattle from 2006-2007, were on large wood boards and canvases. "I did most of my work in a drunken period of prosperity and longing. I encountered many personal setbacks and thus escaped through these paintings, producing images of struggles, of hope and of faith.



Roldan Din, *Hidden Place*, mixed media, 2007

Beginning in 2007, I adjusted to a new life in New York City—stripping away the comforts I was used to—and painted on—small papers and boards. In late 2009, I moved to Utah and everything was new again. I began to catalogue my previous and new works, built my website and showed in a gallery for two consecutive months. I finally accepted my calling as an artist. All throughout these periods, I have always been drawn in the process

...continued on page 3

continued from page 1...

Greek and Peruvian music and dance—the main stages embody the diversity of cultures in Utah and bring the community together for a contemporary experience based on the heritage of past generations.

The **Living Traditions Food Market**, a main attraction for many in the audience, is comprised of twenty food booths operated by local nonprofit community groups and churches that prepare and sell traditional and delicious ethnic foods. From Middle Eastern *falafel* to Pakistani *samosas* and Salvadoran *tamales*—there's a plethora of foods and flavors to enjoy.

At the **Crafts Demonstration Area**, local artisans share the techniques and materials used to create their handmade crafts with the audience. These master craftspeople demonstrate such traditional skills as Tongan woodcarving, Turkish crocheting and Tibetan rug weaving.

Other components of the Festival are a **Native American Pow-Wow Demonstration** and **Bocce Ball Courts**, to be enjoyed by the whole family.

Before the festival opens to the public, the **Living Traditions School Day Program** hosts elementary students from around the Salt Lake valley, providing the opportunity to experience the festival's offerings in an educational format. Presented in partnership with the Utah State Office of Education, the program teaches students about many cultural expressions while learning to value and respect the diverse cultural heritage found in our community. Once the festival opens, the **Living Traditions Kids** area is a place for children to make their own traditional crafts, such as Japanese origami and Mexican paper flowers.

For more information on the 2012 Living Traditions Festival, contact the City Arts Council at 801-596-5000 or at www.livingtraditionsfestival.com. ■



VOLUNTEERS NEEDED FOR THE LIVING TRADITIONS FESTIVAL

The Living Traditions Festival operates with the help of hundreds of volunteers, assisting with various aspects of festival production. If you'd like to make some new friends and get involved with a great community celebration, please sign up to volunteer for the 2012 Living Traditions Festival. Volunteers are scheduled for three-hour shifts and are needed to help with greeting the public, traffic control, grounds maintenance, soft drink sales and setting up and taking down the festival. Interested volunteers can contact the Salt Lake City Arts Council at 801-596-5000. ■

Like us on Facebook



The City Arts Council now has a Facebook page. "Like" us on Facebook to stay updated on Finch Lane Gallery exhibits, Guest Writers Series literary readings, arts education opportunities, quarterly newsletter and other City Arts Council community arts events; click online at www.facebook.com/SLCartscouncil.

For specific City Arts Council programs on Facebook, visit:

- Living Traditions Festival: www.facebook.com/livingtraditionsfestival
- Twilight Concert Series: www.facebook.com/twilightconcertseries ■

continued from page 2...

of creation. In the last few years, my techniques and processes have also evolved and are akin to abstract impressionism.” Din was born in the Philippines and went to college in Hawaii. He has exhibited his work in both Seattle and Salt Lake City.

Bryon Draper’s exhibition includes large and small stone and bronze sculptures. Each piece is made of limestone and cast bronze figure fragments and are meant to be viewed in the round. About his work, he says, “The process of making sculpture is important and satisfying to me. Leaving visual hints of the process in my work gives each piece another avenue of interest for the viewer. The ability to control the medium is important, yet at the same time I want to allow the material to assert itself. One of my most engaging challenges is to find an intuitive balance between the two. It is my desire to create sculptures that are contemplative in nature; a stimulus toward deeper personal meaning.”



Bryon Draper, *Left-Handed Scribe*, stone & bronze, 2008

Many of the stones in Draper’s work have naturally occurring mineral coatings on them and some have traces of red, yellow and other

...continued on page 4

guest writers series



Literary Season Continues

The *Guest Writers Series*, co-sponsored by the Salt Lake City Arts Council and the University of Utah English Department / Creative Writing Program, continues in the spring with two readings presenting nationally-renowned writers. Featured writers on March 22 will be poets Jennifer Perrine and Anne Winters. Concluding the 2011-2012 GWS season on April 12 will be prose writer Laird Hunt and poet Ishion Hutchinson. Readings begin at **7:00 p.m.**, and are free and open to the public. A reception follows to meet the writers.



Jennifer Perrine



Anne Winters



Laird Hunt



Ishion Hutchinson

THURSDAY, MARCH 22

Poet Jennifer Perrine & Poet Anne Winters

Finch Lane Gallery | Art Barn

■ **Jennifer Perrine** holds degrees in Religion, Art, English and Creative Writing. Her work has appeared in various journals, including *Bellingham Review*, *Green Mountains Review*, *Nimrod*, *River Styx*, and *Southern Poetry Review*, among others. Her first collection of poems, *The Body Is No Machine* (2007), won the 2008 Devil’s Kitchen Reading Award in Poetry. Poet Betsy Sholl says, “Jennifer Perrine is a poet of formal agility and surprise, with a command of language that ranges from the spare to the luxuriously rampant, from the scientific to the ecstatic. *The Body is No Machine*—indeed! Here we see the sensual body in all its chameleon shades of gender and passion. These poems are exact, intelligent, vivid, thrilling—a first book to admire, and a poet to watch.” Her second book, *In the Human Zoo* (University of Utah Press, 2011), received the 2010 Agha Shahid Ali Poetry Prize. Perrine lives in Des Moines, Iowa, where she teaches creative writing and gender studies at Drake University, works as a yoga wellness coach and organizes the Younger American Poets Reading Series.

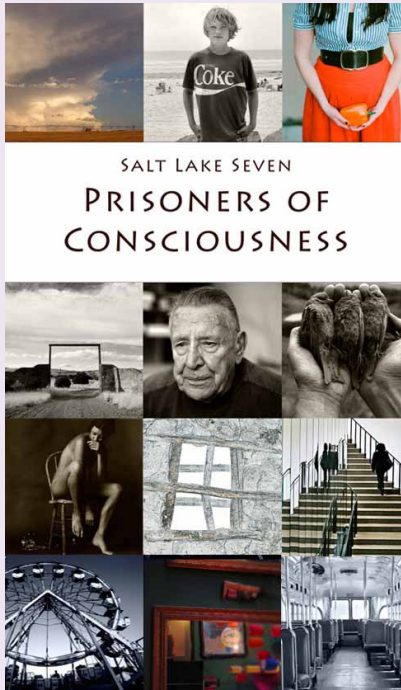
■ **Anne Winters** is the author of *The Displaced of Capital* (2004), which was awarded best book prizes from both of America’s national poetry societies: the William Carlos Williams Prize of the Poetry Society of America, and the American Academy of Poets’ Lenore Marshall Prize of \$25,000 for “the most distinguished book of poetry of the previous year.” Her poems address issues of poverty, homelessness, social inequality

...continued on page 4

continued from page 3...

colors. On many of the bronze figure fragments, Draper leaves traces of the ceramic shell mold material adhered to the surface and seldom repairs casting imperfections." I feel working in this way not only comments on the casting process," he says, "but also relates visually with the natural characteristic of the stone and conceptually with the work."

Having received numerous awards nationwide for his work, Draper has exhibited his work in venues such as Cumberland, Maryland; Carmichael, California; Youngwood, Pennsylvania and Scottsdale, Arizona, among others. He earned a BFA in 1990 and an MFA in 1995 from BYU. He now serves as a faculty member at that institution. He is represented by The Marshall-LeKAE Gallery in Scottsdale.



Salt Lake Seven, *Prisoners of Consciousness*, group photography exhibit

Members of the **Salt Lake Seven** (SL7) photography group title their Finch Lane show *Prisoners of Consciousness*. Says founding member Kent Miles about the

... continued on page 5

continued from page 3...

and the city of New York. Dan Chiasson described her poems as "Miltonic, Marxist, ornate, and indignant," adding that "her real subject is finally how the loveliness of craft measures experience at its most brute and awful, and how experience ruptures even the loveliest of craft." She has been awarded a Guggenheim Fellowship and was a few years ago Chair of the 2009 Pulitzer Prize Poetry Jury. She is the recipient of numerous literary awards, including a National Endowment for the Arts grant. She taught courses in literature, poetry writing and literary translation at the University of Illinois at Chicago until her recent retirement.

THURSDAY, APRIL 12

Prose Writer Laird Hunt & Poet Ishion Hutchinson

Finch Lane Gallery | Art Barn

■ **Laird Hunt** is the author of a book of short stories, mock parables and histories, *The Paris Stories* (2000), originally from Smokeproof Press, now re-released by Marick Press, and four novels, *The Impossibly* (2001), *Indiana, Indiana* (2003), *The Exquisite* (2006) and *Ray of the Star* (2009). His translation of Oliver Rohe's *Vacant Lot* is recently out from Counterpath Press. He is published in France and has novels published or forthcoming in Japan and Italy. His writings, reviews and translations have appeared in the United States and abroad including *McSweeney's*, *Ploughshares*, *The Believer*, *Conjunctions*, *Brick*, *Mentor*, and *Zoom Zoom*. Currently on faculty in the University of Denver's Creative Writing Program, he has had residencies at the MacDowell Colony and the Camargo Foundation in Cassis, France. He and his wife, poet Eleni Sikelianos, live in Boulder, Colorado, with their daughter.

■ **Ishion Hutchinson** was born in Port Antonio, Jamaica. He attended the University of the West Indies, Mona, and received his MFA in Poetry from New York University. His work has appeared in the *LA Review*, *Callaloo*, *Caribbean Review of Books*, *Poetry International* and the chapbook, *Bryan's Bay. Far District* (2010). He is currently a PhD candidate at the U of U, where he was awarded the 2010 Larry Levis Prize. Poet Jacqueline Osherow says of his work, "In this vivid and affecting first book, Ishion Hutchinson gives us a world in which 'everything was about spirits, where a drowned husband sitting in a spotted tree . . . telling me when the mangoes going to fall' is less strange than a father arriving from a distant country on an airplane . . ." Hutchinson's work has appeared in several journals in the USA and abroad. He is a Pirogue Fellow and has been nominated for the 2011 PEN/Joyce Osterweil award for poetry.

The City Arts Council extends appreciation to our co-sponsors—the University of Utah English Department and Creative Writing Program—for continuing the tradition of producing quality literary programming for our audiences. Specifically, we thank Jackie Osherow and Timothy O'Keefe for their ongoing professional guidance and incomparable curating of the series. We extend our gratitude to additional U of U faculty and staff and also to the following for their support: Utah Humanities Council, The King's English Bookshop, Salt Lake City Corporation, Salt Lake County Zoo, Arts and Parks Program, Utah Division of Arts & Museums, Utah Film Center, National Endowment for the Arts, and the U of U Office of the Vice President, College of Humanities and Environmental Humanities Programs. ■

continued from page 4...

advantages of collaboration, “Great things happen when a small group of committed practitioners of any art form gather on a regular basis to show their work and share their ideas. These gatherings become an arena in which creative, technical and philosophical challenges are made and accepted. Ideas are voiced, tried on for size and kept or recycled. The group becomes a sounding board wherein people you have learned to trust respond to your offerings honestly, thoughtfully, fairly, passionately. Criticism is never an attack, merely a response. Therefore you don’t feel threatened. Mistakes become the keys that open doors to new possibilities. Successes become validations that give you confidence to take greater creative risks. Over time, as part of such a group, it is impossible to avoid growth.”

Miles adds, “The Salt Lake Seven—or Six or Eight as occasion allows—is such a group. There has been remarkable growth in the work of each of the members who participate on a regular basis. This seems to be one of the great secrets of success for groups such as this—regular participation. Knowing that your opinion matters to others and that each member of the group looks forward to seeing what you have done since the last meeting is a great motivator. The monthly meeting becomes a little deadline. And as we all know, deadlines make the world go round.” Current members include Carolee Beckham, Rocio Briceño, Brian Buroker, Jeff Edwards, Kent Fairbanks, Justin Hackworth, Brett Howell, Alan Jackson, Kent Miles, Rich North, Carl Oelerich, Bill Patterson, Steve Proctor and Greg Sumner. ■

Artists Christensen and Chun Exhibit their Works at Finch Lane



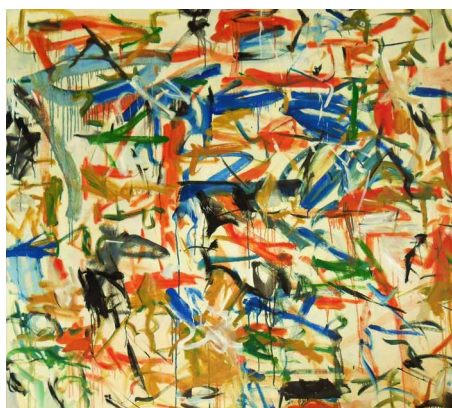
Brian Christensen, *Stucco Men*, stucco/urethane, 2012

A sculpture installation by Brian Christensen and paintings by Oonju Chun will open this spring in the Art Barn’s Finch Lane Gallery, with an artists’ reception scheduled on **Friday, May 4, from 6:00 to 8:00 p.m.** The shows continue through June 15 and are also open for the May 18 and June 15 Gallery Strolls from 6:00 to 9:00 p.m.

Brian Christensen’s exhibit consists of two small sculpture installations and several pedestal and wall sculptures. About this exhibit, Christensen says, “My recent work lies beneath the veneer of the familiar to find the minimal space between conscious and subconscious perception. I am interested in the ability of the human brain to process exterior information and stimuli into extraordinary visions, hallucinations, revelations and epiphanies, which become their own creative reality, on their own plane of existence. In this exhibit, I will

be using a number of methods including modeling, casting, fabrication and assemblage to create sculptures and a small installation, which walk the line between that conscious and subconscious perception.”

Christensen has exhibited in numerous venues; most recently in 2011 *Reinterpretation*, Snow College, (Ephraim) and *Homage*, Rio Gallery (SLC). In 2010, he exhibited in *Guidebook*, Manifest Gallery (Cincinnati), *Moving Types/Lettern in Bewegung*, Typophyle Film Festival (International group exhibition) and *Art of Our Century*, Woodbury Museum of Art (Orem).



Oonju Chun, *Persuasion*, oil, 2011

Oonju Chun says the oil paintings in this exhibit are from her latest series of “gestural brush strokes and attitude in a non-objective expressionistic style. These paintings hold a quick juxtaposition of value against color and soft edges against hard edges.”

Further describing her work, she notes, “Painting is instinctual. The reason I paint is because it carries a voice that cannot be expressed by my words. Painting has evolved into much more of a personal creative process for me in that, as life continues, as it does for all, my work documents my

artistic decisions which no one can duplicate . . . When I walk up to a blank canvas, what happens is a spontaneous visual reaction with each stroke of line or color. I relinquish the responsibility to create meaning, however on a certain level that is the most meaningful aspect of why I paint. I have lived in the United States now for over 30 years, but culturally, I am strongly rooted in my Korean identity. My work inherently merges these two influences. While I identify with the quiet minimalistic sensibilities of Eastern aesthetics, I am always drawn to the rawness of particular Western art.”

Chun received her BFA from University of Utah. Most recently her work was exhibited at the Salt Lake City Main Library gallery, the Bountiful/Davis Art Center and in the Utah Division of Arts and Museum’s group show at the Rio Gallery. ■

Boskoff Says Farewell, But Not Goodbye

Nancy Boskoff, having served for almost 25 years as executive director of the Salt Lake City Arts Council, is taking the opportunity to find new adventures in the arts. Boskoff is pleased to leave the Arts Council in good shape, with a great balance of programs and services for the arts community and the community-at-large. She says, "While this is farewell, it won't be goodbye as I'll be active in the arts in some capacity, yet to be determined."

With mixed emotions, Boskoff is sad to leave an inspired and hard-working staff and an engaged and committed board. At the same time, she notes a confidence in the future of the Arts Council which enjoys a high level of community support. It is with a sense of accomplishment that Boskoff feels she can move on to another chapter in her professional life, knowing that the Arts Council will continue, as it always has, to be creative, productive and responsive to the community. Boskoff's gratitude is unbounded for the all the rewarding moments she has had as director of the Arts Council and to all the remarkable people she has had the good fortune to work with, as friends, colleagues and confederates. ■

Message from the Arts Council Board

After nearly 25 years, Nancy Boskoff is retiring as Executive Director of the Salt Lake Arts Council. The results of her tireless work are so many and obvious that, even though we'll miss her, she'll still be around.

A vibrant arts community helps create a
...continued on page 7

Public Art News

FLYING OBJECTS 3.0

The Salt Lake Art Design Board has launched *Flying Objects 3.0*, the third in the series for this temporary public art project in downtown Salt Lake City. Recently selected are twelve Utah artists to create new sculpture to be installed this June. Each selected artist/team will be paid a \$5,000 honorarium and their work will be returned to them at the end of the two-year project period.

For this selection process, artists were asked to build scale models of the work they proposed. Twenty models and written proposals were reviewed by the Design Board for consideration. The following artists will participate in *Flying Objects 3.0*:

Ric Blackerby, *The Man on the Flying Trapeze*
Bill Dunn, *Fifth String* • Jerry Fuhriman & Arthur Taylor, *Queen Quinllas's Gambit*
David Holz, *The Seagull Has Landed* • Nathan Johansen, *Fly Snag*
Lenka Konopasek, *Urban Tornado* • Tim Little, *Fly Utah* • Frank McEntire, *The Monkey Wrench*
James Proctor, *Tumbling* • Greg Ragland, *Feathers in the Wind* • Dave Starks, *Salt Lake Airline*
Syrah Sterling, *Comet*

The materials and visuals are quite diverse and very creative—ranging from a variety of patinaed and painted metals to fiberglass and found objects depicting imagery of leaves, a comet, planes, and a tornado. All of the artists live and work in Utah and many are first-time participants in the City's public art program. The three installation sites are: 10 South West Temple, in front of Abravanel Hall and the Utah Museum of Contemporary Art; 15 West 200 South, across the street from the Capitol Theatre near the Hotel Monaco; and 125 West 300 South in the median in front of the Rose Wagner Performing Arts Center. *Flying Objects 3.0* is funded in partnership with the Redevelopment Agency of Salt Lake City and Salt Lake City Corporation.

EMIGRATION BENCHES PUBLIC ART PROJECT

In December 2011, *Trees*, four bas-relief cast bronze benches designed by artist Day Christensen were installed along 1300 South between 1500 and 1700 East in the Yalecrest and Westmoreland Place neighborhoods. Christensen was selected by the Salt Lake Art Design Board for successfully addressing the project goals of creating pedestrian-scale artwork to reinforce and accentuate 1300 South—the vibrant residential / commercial street that joins the two neighborhoods. Christensen considered the area's architecture, trees, character and landscape elements when designing his benches. Using an "Arts and Crafts" style, he designed each bench to represent a different tree common to the area—sycamore, elm, maple and ash. He used leaves, branches, and seeds to create the designs for the cutout relief panels on the bench backrests. ■



Day Christensen, *Trees* (Elm), cast bronze, 2011: located on the street island at 1300 South 1500 East. The three other remaining benches are located at Uintah Elementary School's main entrance (1571 East 1300 South), in front of Eggs in the City (1675 East 1300 South), and across the street in front of Jolley Corner Pharmacy (1676 East 1300 South).



Frank McEntire, *The Monkey Wrench*, cast bronze/fiberglass, 2012

continued from page 6...

lively and thriving city. The Arts Council, under Nancy's leadership, has been invaluable in supporting the arts in Salt Lake City in so many ways. There are the things you can easily see—the Twilight Concert Series and the Living Traditions Festival, and the public art that pops up in neighborhoods and at TRAX stations all over town and the literary readings and gallery exhibits at the Art Barn. But there are also the grants, the taxpayer dollars that go back into the community to help organizations large and small keep going. Additionally, the arts education programs have exposed thousands of children to the joy of creating art and encouraged future artists. All these wonderful programs make Salt Lake a true arts destination and we can thank Nancy for her contributions in making this happen.

Nancy is moving on, but the results of her work stay for all of us to enjoy and cherish. We are so grateful for all she has done for our community. We eagerly wait to see what she tackles next. But first, there's a tropical beach waiting!

—Lynn Hoffman-Brouse,
Chair of the Salt Lake City
Arts Council Board ■

Warm Welcome to the Arts Council's New Executive Director

Following the recent departure by longtime executive director Nancy Boskoff, Salt Lake City resident Karen Krieger has been named the new executive director of the Arts Council. Krieger has a strong background in the field and is a welcome choice thanks to her vision, her professional experience and her enthusiasm for the Arts Council and its legacy in the community.



Krieger has many years in management and arts administration, most recently at the Utah Division of Parks and Recreation. Her responsibilities have included the management of museums, cultural sites, art galleries, arts education and public programming. In recent years, she has served on the boards of the Utah Cultural Alliance, Salt Lake County Center for the Arts, and Friends of Gilgal Gardens.

The Arts Council is a division in Salt Lake City's Department of Community & Economic Development and CED Director Frank Gray welcomes Krieger to the team, "excited about the potential for the sustainability and growth in the arts community, benefiting both residents and visitors to Salt Lake, and confirming the City's continued commitment to the arts with this appointment." Outgoing Arts Council director Nancy Boskoff says she is "pleased to see a new director with an eclectic and solid mix of public and private sector experience in the field" and looks forward to the continued success of the Arts Council.

With Salt Lake City increasingly recognized as a center for excellence and diversity in the arts, Krieger accepts this key position with "a sense of enthusiasm and investment in the future for the great arts scene we have. I am as passionate about public service as I am about the importance of public support for the arts." ■

Applications and Call for Entries Due in March



BROWN BAG CONCERT SERIES

The City Arts Council announces that the application for the 35th annual Brown Bag Concert Series is now available. The free lunch hour concerts are presented in public parks and plazas downtown weekdays in August. The deadline for submitting an application is **Friday, March 9**.



FINCH LANE GALLERY | ART BARN

Call for entries and the application are available for Utah visual artists who would like their work to be considered for exhibitions scheduled January through November 2013 in the Finch Lane Gallery. Completed applications, accompanied by images of the artist's work, are due at the Arts Council office by **Monday, March 12**. ■

2012-2013 City Arts Grants Applications Available

The guidelines and application for the Salt Lake City Arts Council's 2012-2013 General Support and Project Support grants will be available in mid-April with the deadline set for mid-June. City Arts Grants support artists, arts organizations and other nonprofits for arts programs that take place in Salt Lake City. Completed applications are due by **5:00 p.m. on Monday, June 11**. Also available are guidelines and applications for Arts Learning grants; the deadline is **Friday, April 13, 5:00 p.m.** Additional information about all grants categories is available online at www.slcgov.com/arts. The City Arts Grants program is supported through an annual appropriation from Salt Lake City Corporation. ■



calendar

MARCH
APRIL
MAY

While care has been taken to assemble accurate information on scheduled arts events, it is recommended that you contact the organizations or host locations listed to confirm dates, times and ticket prices. Compiled by Amanda Maestas.

MUSIC

GINA BACHAUER PIANO FOUNDATION,
801-297-4250
ROSE WAGNER PERFORMING ARTS CENTER
Dimitri Levkovich Apr 13
CATHEDRAL OF THE MADELEINE, 801-328-8941
Founders Day Concert Mar 18
Good Friday Choral Meditation Apr 6
Madeleine Festival Concert,
John Tavener, Angels May 20
CHAMBER MUSIC SOCIETY, 801-561-3999
LIBBY GARDNER HALL
Modigliani Quartet Mar 28
Pavel Haas Quartet Apr 24
KINGSBURY HALL, 801-581-7100 or
www.kingtix.com
Edward Sharpe and the Magnetic Zeros ... Mar 23
Rain Mar 24-25
University Lyric Opera Ensemble-
Susannah Apr 20-21
MUSIC ON TEMPLE SQUARE, 801-240-3323,
801-570-0080,
For ticketed events call 801-570-0080.
TABERNACLE
Bring Forth My Zion; BYU Idaho Choirs
and Orchestra Mar 10
Orchestra at Temple Square Mar 16-17
Temple Square Chorale and Orchestra
At Temple Square, Easter Concerts
(ticketed event) Apr 6-7
ASSEMBLY HALL
U.S. Air Force Academy Band's
Rampart Winds, woodwind quintet Mar 2
Alice Demske Hansen, piano Mar 3
Ariel Bybee and Friends, Singing Prayers ... Mar 9
Utah Baroque Ensemble Mar 23
David Tolk, piano Apr 13
Mountain West Chorale Apr 14
Utah Federation of Music Clubs
Honors Recital Apr 18
University of Utah Runnin' Fl'Utes
flute Choir Apr 20
Martin Setchell, New Zealand organist Apr 24
Schubert Singers Apr 27
Murray Concert Band Apr 28
CONFERENCE CENTER THEATRE
Ogden Institute of Religion Choirs: Spring
Variety Show (ticketed event) Apr 21
*Thirty-minute organ recitals are given in the Taber-
nacle weekdays and Saturdays at
2:00 pm in the Conference Center
The Mormon Tabernacle Choir broadcasts live
each Sunday from 9:30 to 10:00 am.
Guests are welcome and need to be
seated by 9:15 am when the doors are closed.*

*Choir rehearsals are open to the public on
Thursdays at 8 pm.*
NOVA CHAMBER MUSIC SERIES, 801-463-5223
LIBBY GARDNER HALL
Schubert Mar 11
Strauss, Schoenberg, Ives, Adams Apr 1
SALT LAKE CHORAL ARTISTS, 801-953-1793
LIBBY GARDNER HALL
Sacred Service(Avodath Hakodesh) ... Apr 28, May 1
SALT LAKE SYMPHONY, 801-531-7501,
www.saltlakesymphony.org
LIBBY GARDNER HALL
Glorious Beethoven: *Gloria from
Missa Solemnis, Symphony No. 9
"Choral"* Mar 26
Spring Concert Apr 21
Exploring Personality May 19
UNIVERSITY OF UTAH
DAVID GARDNER HALL
Wind Ensemble & Symphonic Band Mar 1
Sundays @ 7 Faculty Spotlight Mar 4
Utah Composers Ensemble Mar 19
Women's Chorus Festival Mar 21
Virtuoso Series: Vivaldi Virtuosi Mar 25
Jazz Guitar Ensemble Mar 27
University of Utah Singers Mar 30-31
Percussion Ensemble Apr 3
Honors String Quartets Apr 5
Harp Ensemble Apr 6
Graduate String Quartet Apr 9
Jazz Big Bands Apr 10
University Campus Symphony Apr 11
Wind Ensemble & Symphonic Band Apr 12
University of Utah Women's Chorus Apr 14
Electro-Acoustic Music: Crosstalk Apr 19
Classic Guitar Ensemble Apr 20
Early Music Ensemble Apr 21
Flute Choir Apr 22
U of U Singers & A Cappella Choir Apr 23
Composers Forum Apr 24
Jazz Combos Apr 25
New Music Ensemble Apr 25
Piano Monster Concert May 5
UTAH CHAMBER ARTISTS, 801-572-2010
LIBBY GARDNER HALL
Poetry & Music, Spring Concert Apr 30
UTAH SYMPHONY | UTAH OPERA, 801-533-NOTE,
www.usuo.org
OPERA, CAPITOL THEATRE
The Elixir of Love Mar 10, 12, 14, 16, 18
Of Mice and Men May 5, 7, 9, 11, 13
SYMPHONY, ABRAVANEL HALL
Brahm's Symphony No. 1 Mar 2, 3
Saint-Saens' *Carnival of the Animals* Mar 10
Rachmaninoff's Piano Concerto No. 3 ... Mar 23, 24
Mahler's Symphony No. 4 Apr 6, 7
Beethoven's *Eroica* Apr 13, 14

Magical Music of John Williams Apr 17
Classic Mystery Tour:
A Tribute to the Beatles Apr 20, 21
Mozart's Requiem Apr 27-28
All-Star Evening May 15
Brahm's Piano Concerto No. 1 May 18, 19
Beethoven's Cycle Concludes,
Symphony No. 1 May 25, 26
UTOPIA EARLY MUSIC, 801-649-8522
MADELEINE CHOIR SCHOOL,
ERBIN HALL ORATORY
*Love's Sanctuary: New Music of the
14th Century* Mar 3, 4

DANCE

BALLET WEST, 801-323-6900, www.balletwest.org
CAPITOL THEATRE
Emeralds Apr 13, 14, 18-21
Innovations 2012 May 18, 19, 23-26
KINGSBURY HALL, 801-581-7100, www.kingtix.com
Modern Dance Department, Twyla Tharp's
Sweet Fields Mar 9-10
REPERTORY DANCE THEATRE, 801-534-1000,
www.rdtutah.org
ROSE WAGNER PERFORMING ARTS CENTER
Passage Mar 22-24
RIRIE-WOODBURY DANCE COMPANY, 801-297-4213,
www.ririewoodbury.com
ROSE WAGNER PERFORMING ARTS CENTER
Cabaret of Fools Mar 31
Iridescence Apr 26-28
UNIVERSITY OF UTAH,
MARRIOTT CENTER FOR DANCE, 801-581-7100
Ballet Ensemble Mar 1-3
Utah Ballet Mar 22-31
Modern Senior Concert I Apr 5-7
Modern Senior Concert II Apr 12-14
Student Concert Apr 19-21
Ballet Graduate Show Apr 25-26
Ballet Senior Show May 3

FESTIVALS & SPECIAL EVENTS

SALT LAKE CITY ARTS COUNCIL, 596-5000,
www.slccgov.com/arts
27th ANNUAL LIVING TRADITIONS FESTIVAL
SALT LAKE CITY & COUNTY BUILDING
A Celebration of Salt Lake's
Folk & Ethnic Arts May 18, 19, 20

LITERARY ARTS

KINGSBURY HALL, 801-581-7100, www.kingtix.com
Circus Oz Mar 20-21

... continued on page 9

continued from page 8...

Golden Dragon Acrobats. Apr 13-14
SALT LAKE CITY ARTS COUNCIL, 801-596-5000,
www.slccgov.com/arts
GUEST WRITERS SERIES (Cosponsored by
U of U English Department and
Creative Writing Program)
ART BARN/FINCH LANE GALLERY
Jennifer Perrine, poet;
Anne Winters, poet Mar 22
Laird Hunt, prose writer;
Ishion Hutchinson, poet Apr 12
ANNE NEWMAN SUTTON WEEKS POETRY SERIES,
 801-852-2376
 WESTMINSTER COLLEGE
 Fiona Sze-Lorrain Apr 20
WORKING DOG READING SERIES, 801-581-6168
ART BARN/FINCH LANE GALLERY
 Reading. Mar 29
 Reading. Apr 19

THEATRE & FILM

BABCOCK PERFORMING READERS
U OF U OLPIN UNION BLDG LITTLE THEATRE
Shadows. Mar 15
Enchanted April. Apr 19
BROADWAY ACROSS AMERICA, 801-355-ARTS
CAPITOL THEATRE
The Beauty and The Beast. Mar 20-25
Million Dollar Quartet. opens May 29
CHILDREN'S THEATRE & SCHOOL OF THE ARTS,
 801-532-6000, www.tctheatre.org
Flash Gordon. Mar 2, 3, 9, 10, 16, 17, 23, 24
Cinderella. May 4, 5, 11, 12, 18, 19, 25, 26
GRAND THEATRE, 801-957-3322,
 www.the-grand.org
The Crucible. Mar 8-24
Xanadu, the musical. May 10-26
KINGSBURY HALL, 801-581-7100, www.kingtix.com
Rock of Ages. Mar 2-3
Monster In My Closet. Mar 29-31
OFF BROADWAY THEATRE, 801-355-4628,
 www.laughingstock.us
Gleek School Musical. thru Mar 10
The Adventures of Sheer-Luck Homes
and Snotson. Mar 30-Apr 28
Greece Is The Word. opens May 18
Laughing Stock: improv comedy,
 Fridays and Saturdays. Mar, Apr, May
PIONEER THEATRE COMPANY, 801-581-6961,
 www.pioneertheatre.org
Emma. thru Mar 3
Laughing Stock. Mar 23-Apr 7
Man of La Mancha. May 4-May 19
PLAN-B THEATRE COMPANY,
 www.planbthetrecompany.org
ROSE WAGNER PERFORMING ARTS CENTER
The Third Crossing. Mar 8-18
The Scarlett Letter. Apr 12-22
 Script-in-Hand Series: *The Lab Recital*. Apr 18
 Ninth Annual *Slam*. May 12
PYGMALION THEATRE COMPANY, 801-355-ARTS
ROSE WAGNER PERFORMING ARTS CENTER
Seven. thru Mar 11
In the Next Room. May 3-20

SALT LAKE ACTING COMPANY, 801-363-SLAC,
 www.saltlakeactingcompany.org
MARMALADE HILL CENTER
Red. until Mar 4
Course 86b in the Catalogue. Apr 11-May 6
UTAH FILM CENTER, 801-746-7000
 www.utahfilmcenter.org
 Call or check website for screenings . . . Mar, Apr, May
SALT LAKE FILM SOCIETY, 801-321-0310
 www.saltlakefilmsociety.org
 Call or check website for screenings . . . Mar, Apr, May

VISUAL ARTS

Spring Gallery Strolls will take place on
Friday evenings
March 16, April 20 and May 18 all 6-9 pm,
sponsored by the Salt Lake Gallery Association.
 www.gallerystroll.org

ART ACCESS, 801-328-0703, www.accessart.org
 Maritza Torres, Veronica Perez & Ruby Chacón;
 Amber DeBirk & Eleanor Scholz . . . thru Mar 9
 Ric Blackberry, metal sculptures & jewelry;
 Mary Boerens Sinner, paintings. . . Mar 16-Apr 13
 Gestalt Portraits by Margaret Tarampi;
 Shirley Tegan, wooden sculptures. . . Apr 20-May 8
 10th Annual 300 Plates
 Fundraiser & Exhibition. opens May 14
ART BARN, 801-596-5000, www.slccgov.com/arts
FINCH LANE GALLERY
Fahimeh Amiri, paintings; Loné Vilnius,
assemblages/mixed media thru Mar 2
Roldan Din, mixed media; Salt Lake Seven,
photography; Bryon Draper,
sculpture Mar 9-Apr 27
Brian Christensen, sculpture; Oonju Chun,
paintings opens May 4
KAYO GALLERY, 801-532-0080
 Wren Ross & Steve Larson. Mar
 Bad Art Show Apr
 Desarae Lee & David Habben. May
LOGE GALLERY, 801-581-7222
PIONEER THEATRE
 Ben Behunin Mar 23-Apr 7
50 Years of Pioneer Theatre Design. May 4-May 19
PHILLIPS GALLERY, 801-364-8284
 Joe Carter. Mar 16-Apr 13
SALT LAKE CITY LIBRARY
MAIN LIBRARY, 801-524-8200
After So Many Years,
 Steven J. Fawson thru Mar 9
Animals of Affection, Andrea Pike. thru Mar 11
SPRAGUE BRANCH, 801-594-8640
Silhouettes 2011: A Stamp in Time. . . . Apr 9-May 31
Between Earth and Orion. thru Mar 30
SWEET LIBRARY, 801-594-8651
Red Rock Refraction, Carol Berrey. . . . Mar 26-May 5
SOUTHAM GALLERY, 801-322-0376
The Beauty of the Great Outdoors,
 featuring Richard Boyer, A.D. Shaw,
 Kimbal Warren Dec 1-30
 Rob Adamson, Scott Brough, Anne Marie Oborn,
 new paintings Jan 5-30
Made with Love, for Your Love,
 small paintings. Feb 1-28

UTAH ARTS FESTIVAL, 801-599-2040
Travelogue, Randy Laub, Paul Titus &
Steve Midgley. thru Mar 9
Perception, Miranda Whitlock, Blake Palmer
 & Verl Adams Mar 16-Apr 13
Natural Treasures, Richard Horrocks,
 Kevin Wellard & Gary Merrell . . . Apr 20-May 11
Participation/Caught Up in the Moment,
 Christine McDonough, Michelle Condrat
 & Kim Blackburn opens May 18
UTAH MUSEUM OF CONTEMPORARY ART,
 801-328-4201, www.utahmoca.org
 Joshua Luther: *Meaning*. thru Apr 21
 Sundance Film Festival:
New Frontier. thru May 19
Fax. opens Mar 2
UTAH MUSEUM OF FINE ARTS, 801-581-7328,
 www.umfa.utah.edu
 Georges Rouault thru May 13 ■

salt lake city arts council



The City Arts Council is a division in the
 SLC Department of Community &
 Economic Development.

ART BARN | FINCH LANE GALLERY
 54 FINCH LANE, SLC, UTAH 84102
 Phone: 801.596.5000
 Fax: 801.530.0547
 Website: www.slccgov.com/arts

Lynn Hoffman-Brouse. Chair
 Karen Krieger. Executive Director
 Kim Duffin. Editor, Assistant Director
 Casey Jarman Programs Director
 Roni Thomas Public Art Program Manager
 Kelsey Moon. Arts Administrator
 Amanda Maestas Administrative Secretary
 Ryan Rhodes Facility Coordinator

GALLERY HOURS

Monday–Friday, 9:00 a.m.–5:00 p.m.

OFFICE HOURS

Monday–Friday, 8:30 a.m.–5:00 p.m.

GALLERY STROLL HOURS

Third Friday Monthly, 6:00–9:00 p.m.

The Salt Lake City Arts Council affords all
 persons with equal access to programs
 without regard to race, religion, sex, national
 origin, disability, age, or sexual orientation.
 Funding is provided by Salt Lake City Corpo-
 ration with additional support from contribu-
 tions; earned income; and grants from the
 Utah Division of Arts & Museums; the Zoo,
 Arts and Parks Program of Salt Lake County;
 and the National Endowment for the Arts.

Design: www.ridge-creative.com