

# FINAL REPORT

**Pioneer Park Public Workshop**  
Friday, December 5, 2008, 9 am – noon  
Gallivan Plaza, Center Stage Conference Room



---

Co-Sponsored By

**Salt Lake City Council**



## Table of Contents

1) Summary of Workshop Process .....	3
2) Emerging Themes .....	4
i) Security and safety.....	4
(a) Programming and activities in the park .....	4
(b) Moving and redesigning the bathrooms.....	5
ii) Encouraging park use by the larger SLC community.....	5
iii) Validity of the design themes .....	5
iv) New design components .....	6
iv) Next steps.....	7
3) Prioritization of Design Components .....	7
4) Summary of Discussion .....	9
i) Extent of desirable improvements in the park .....	9
ii) Improved security for the park .....	9
iii) Add conservation as a design theme .....	10
iv) Build on historic design theme .....	11
v) Design for a variety of visitor groups .....	11
vi) Provide / facilitate activities that draw people from outside the neighborhood to the park year-round .....	11
vii) Provide / facilitate activities that build a sense of community .....	12
viii) Facilitate / maintain free movement through the park .....	12
ix) Upgrade / develop the south side of the park (along 400 South).....	13
x) Improvements specific to the Farmers Market .....	13
xi) Comments about specific design components.....	13
 Appendix 1	
Agenda.....	16
 Appendix 2	
Workshop Participants.....	17
 Appendix 3	
Pioneer Park Drawings; Stages I, II, III.....	19
 Appendix 4	
Individual Design Components (Basis for Prioritization).....	22
 Appendix 5	
Prioritization Votes.....	28

Co-Sponsored By

**Salt Lake City Council**



## 1) Summary of Workshop Process

In May 2008, shortly before Phase 1 infrastructure improvements to Pioneer Park were completed and the park reopened, Mayor Ralph Becker and City Councilman Luke Garrott co-convened a community dialogue about the park. Initiated as a Salt Lake Solutions project, a Partners Team drawn from the immediate neighbors of the park – residents, businesses, homeless community representatives, other property owners and local police – has been working to implement strategies to ensure the park’s safety and liveability. The group’s primary focus during the summer of 2008 was to obtain community commitments for regular lawful activities during the park’s extended summer hours (seven days a week, 7 am – 11 pm). The group’s next focus was getting public input on the need for additional infrastructure in the park. Additional information about the Pioneer Park community dialogue can be found at: [www.slcgov.com/SLSolutions](http://www.slcgov.com/SLSolutions).

City Councilman Luke Garrott and Mayor Becker’s Salt Lake Solutions staff designed a public workshop which was held in December 2008 to gather additional community input on the existing design plans for Pioneer Park. The existing design plans were finalized in 2004 at the conclusion of a multi-year public involvement process. The focus of the public workshop was therefore limited to the following issues:

- Confirm whether Phases 2 and 3 of the design plans still meet the changing community’s needs; and
- Prioritize individual design components, on the assumption that there is inadequate current funding to complete all components in both phases.

Participants were invited to the public workshop from the following stakeholder categories:

- Residents from the Pioneer Park immediate neighborhood
- Businesses around Pioneer Park (hotel, retail and businesses with employees who may use the park at lunchtime)
- Other Pioneer Park neighbors
- Downtown community beyond Pioneer Park
- SLC Police Department
- Homeless community (service providers and homeless individuals)
- Greater SLC community

---

Co-Sponsored By

Salt Lake City Council



The public workshop was held in the Center Stage Conference Room of the Gallivan Plaza. Participants were seated at small round tables, with a cross-section of interests represented at each table. Each small table discussion was facilitated by an experienced facilitator, with the goal of having a full discussion, not necessarily gaining consensus. After a presentation about the existing design plans and demographic trends for the Pioneer Park area, each small table had a discussion about the continued applicability of the design themes and individual design components. The major points of discussion from each small table were then shared with the full group, and a full group discussion ensued. Finally, each participant was asked to prioritize the individual design components.

Although invited to the workshop, homeless individuals who use Pioneer Park were unable to attend. In order to include their input, a separate abbreviated workshop was held at The Road Home shelter on December 30, 2008. After an overview of the design plans and a full group discussion about how this population uses the park, participants were asked to identify their top five priority items to be built in Pioneer Park.

The agenda for the public workshop can be found in Appendix 1. Appendix 2 contains a listing of all individuals who attended or otherwise participated in the public workshop. Appendix 3 contains the existing design plans (all three phases).

## 2) **Emerging Themes**<sup>1</sup>

Two significant themes emerged from the workshop discussions:

### i) ***Security and safety***

Safety and security in and around the park were viewed by all as a primary and immediate concern. There was general consensus about two potential solutions:

#### (a) **Programming and activities in the park**

Participants agreed that the security and safety in the park is maximized when there are people using the park for a variety of lawful purposes. Design features, such as a pavilion or great lawn or ice rink or the existing sports courts facilitate self-directed activities in the

---

<sup>1</sup> This final report was drafted by staff for Salt Lake Solutions, based on notes taken by public workshop facilitators and others. Any conclusions expressed in this report are those of the author, and have not been specifically approved by Mayor Ralph Becker, Salt Lake City Council or the Pioneer Park Partners Team.

---

Co-Sponsored By

**Salt Lake City Council**



park. Investment in regular programming for the park was also highlighted as supporting increased safety and security.

(b) **Moving and redesigning the bathrooms**

The current bathrooms have been cited by all, including the SLCPD, as unsafe and a host area for illegal activities. While various locations and configurations were proposed for new bathrooms, the following general features are important:

- Personal safety while inside
- Restriction to use by one person at a time
- Clear visibility of bathroom entrances from a distance
- Ease of police accessibility to the entire perimeter of the bathroom building(s)
- Location near areas of the park with regular activity

ii) ***Encouraging park use by the larger SLC community***

This was an underlying objective of several design component suggestions. The Saturday Farmers Market meets this objective. The various ice rink suggestions similarly were viewed favorably by many participants because this amenity would bring people to the park, making it more difficult for illegal activities to take place there.

Some participants expressed concern, however, that use of the park by the larger SLC community not conflict with the quaint nature of the existing park, nor prevent use of the park as a neighborhood park.

iii) ***Validity of the design themes***

In general the workshop discussions confirmed the validity of the design themes reflected in Phases 2 and 3 of the design plans:

- Trees
- Active and passive recreation
- Farmer's market
- Neighborhood and visitor activities
- Festivals / concerts / events

There were extensive discussions about the importance of highlighting and retaining the history of the park and surrounding neighborhood, but the prioritization voting reflected a reluctance to spend money on design components related to history.

---

Co-Sponsored By

Salt Lake City Council



Preservation of trees and green space in the park arose as a strong theme. Some participants suggested that conservation should be an added design theme. Conservation in this context was defined as reducing water use and planting native, water-wise vegetation.

Based on workshop discussions and prioritization voting, the Phases 2 and 3 design plans should not be constructed without review and adjustment. While the design themes are still valid, the group as a whole placed a higher priority on design components that address security and safety, and facilitate use of the park by a large number of people. The Phases 2 and 3 design components receiving the highest priority were:

- Café / Stage / Restrooms
- Great Lawn
- Historic Walkway.

#### iv) ***New design components***

Several new design components were suggested by workshop participants and received a high priority in the voting. In general, the new design components relate to the participants' strong concern for security and safety, or to the evolution of the immediate neighborhood around Pioneer Park.

- Creating a **safe bathroom** space was the no. 1 priority of the workshop participants, as evidenced by the high priority given to both the café / stage / restrooms combination and the new suggestion of simply removing the existing bathrooms and/or moving them to the park perimeter.
- **Ice skating rink and associated summer activity space.** There were various visions of the ice skating area and other year-round use of this space, but many participants felt this type of facility would be a beneficial addition to the park and would serve a currently unmet community need. This option also received a fair number of “no build” votes.
- Building a **police substation** within the park boundaries received great support.
- The **Saturday Farmers Market** was viewed by many participants as an integral part of the park, based on the large number of votes for improved access into the farmers market area from the west

---

Co-Sponsored By

Salt Lake City Council



and east sides of the park. This option also received a fair number of “no build” votes.

- **Integrating the park with adjacent retail.** Access from the park to retail outlets along the north perimeter is easy and occurs regularly. Participants discussed finding a way to provide safe access to retail outlets opening up along the south perimeter of the park, across the busy and congested 400 South corridor.

iv) ***Next steps***

The final report of the public workshop will be presented to Mayor Becker and the Salt Lake City Council for their information and will inform future discussions about any additional improvements for Pioneer Park. The Pioneer Park Partners Team will also review the final report and explore whether it wishes to play a role in pursuing additional infrastructure improvements for Pioneer Park.

### 3) **Prioritization of Design Components**

The design components subject to prioritization included the individual design elements of the Phases 2 and 3 design plans, along with new components added from the small group discussions. Appendix 4 reflects the listing of individual design components that participants were asked to prioritize. Appendix 5 shows a compilation of votes in the prioritization exercise.

Participants in the public workshop were asked to prioritize among these design components using dots; they were asked to place dots on a list of design components:

- A smiley face dot on the top priority item to be built in Pioneer Park.
- Green dots on four additional top priority items to be built in Pioneer Park (for a total of five top priority items).
- Red dots on any items the participant did not want built at all; they could place an unlimited number of red dots.

Some invitees who could not attend the workshop submitted their prioritization electronically after receiving a brief description of the additional components added during the workshop. These “votes” are included in the compilation of votes in Appendix 5.

---

Co-Sponsored By

**Salt Lake City Council**



Participants in the abbreviated workshop held at The Road Home were asked to identify their top five priority items to be built in Pioneer Park (again using dots). Those items receiving more than one “vote” from The Road Home participants were counted together as one additional vote in the compilation of votes.

The following chart lists the design components in prioritized order:

Design Component	Do Not Build Votes	Do Build Vote
Café / Stage / Restrooms	1	16
[Removable] Ice Skating Rink / Summer Activity	6	15
Police Substation	1	11
Farmers Market Access into and out of Park	6	10
Bathrooms – Remove or Move to Perimeter	2	9
Great Lawn	2	8
Historic Walkway	3	6
South Side of Park – Develop and Access	2	6
Bury Existing Power Boxes	3 1 (build later)	5
More Lighting		5
Circulation Paths	1	4
Heritage Gardens	7	4
Interpretive Signage	6	4
Moveable Gathering / Picnic Areas	1	3

Co-Sponsored By

Salt Lake City Council



Design Component	Do Not Build Votes	Do Build Vote
Fixed Location / Picnic Areas		3
Trees	1	3
Community Garden Plots	11 1 (build later)	3
Historic Bell Tower	7	2
Volleyball, Basketball, Tennis	4 1 (build later)	2
Adolescent – Teenage Youth Activity	12	2
Historic Themed Playground	11 1 (build later)	1

#### 4) **Summary of Discussion**

The following summary captures the major themes of discussions during the workshop itself (small table and full group discussions), as well as input provided via e-mail by invitees who could not participate in person and at The Road Home abbreviated workshop. Individual comments may be inconsistent with each other, but they reflect the range of input provided by workshop participants.

- i) **Extent of desirable improvements in the park:**
  - No additional improvements to the park are needed; spend the money on PR and programming for the park.
  - Don't "overbuild" the park.
  - Maintain the park as small scale, local, quaint (not another Gallivan).
  - Provide activities and design features that are unique to Pioneer Park.
- ii) **Improved security for the park**
  - Existing bathroom location and design encourage / facilitate illegal activity.

---

Co-Sponsored By

Salt Lake City Council



- Dog park needs to be policed more often to prevent use by humans as a bathroom.
- Ensure that new designs / activities do not themselves compromise safety.
- Gardens can create “unpredictable” use patterns that discourage illegal behaviors.
- Activities targeted specifically at teenagers may require a strong police presence.
- Restrict cross-park communication and movement.
- Add a police substation within the park boundaries, perhaps along the perimeter of the “great lawn”.
- Mounted police, with on-site horse stables.
- Police enforcement activities need to encompass the entire area simultaneously (park, homeless shelter, Gateway and in between); strong enforcement in one specific area merely moves the illegal activity elsewhere.
- Increased lighting, possibly with motion detectors.
- Lights for use of park at night, especially on “great lawn”.
- Security cameras.
- Build a steep berm around the perimeter of the “great lawn,” while maintaining truck access along the north and south ends.
- Place restrictive fencing or barricades around the perimeter of use areas (such as the children’s playground) and restrict access for intended uses.
- Increased activity in the park will result in increased security.
- Have volunteers available on-site to keep park clean and beautiful, and to let visitors know about the history of the park; volunteers should be identified by some Pioneer Park-specific clothing (e.g., logo shirts).

iii) **Add conservation as a design theme**

- Include native, water-wise plants in landscaping plans.
- Avoid species requiring large quantities of water.
- Greenscape with indigenous plants.
- Expand perimeter of grass lines under trees to allow rain water to reach tree roots.
- Retain the same number of trees, even if you have to change their location to accommodate the “great lawn”.
- Do not remove any more trees. There were many complaints because trees were removed in Phase 1.<sup>2</sup>

---

<sup>2</sup> Participants accurately stated that some trees were removed during Phase 1 construction. While 16 trees were removed, 62 new trees were planted in various locations around the park. The majority of trees removed were along 400 South; many were in great decline, dead or a

iv) **Build on historic design theme**

- Community gardens
- Install statue at 300 South 300 West corner of park.
- Carriage rides in the park.
- Historic-themed lighting and decorations.
- Historic walking tours starting/ending at the park (and including historic park features).

v) **Design for a variety of visitor groups**

- Current resident population includes older, retired individuals or young, individuals without children; therefore limit number of child-focused activities.
- Provide opportunities for different cultures and ages to interact.
- Families with children to spend large amounts of time at the park.
- Older individuals.
- Less-able individuals – provide handicap – access / handicap facilities.
- Youth / young adults.
- Homeless population.
- Create a grand entrance to SLC with a pedestrian walkway / shopping area down 300 South (from the intermodal hub to Pioneer Park) and turning up 300 West (from Pioneer Park to the Gateway).

vi) **Provide / facilitate activities that draw people from outside the neighborhood to the park year-round**

- Create an area that established groups can use (bowery or pavilion).
- SLC information/visitor center as part of the pavilion.
- Take top third of “great lawn” and create a separate activity.
- Winter: hockey-sized ice rink (only hockey-sized ice rink in Salt Lake Valley is in Kearns).
- Summer: roller derby or picnic / concert space.
- Hockey teams as possible financial partner.
- Some concern expressed about a hockey-sized rink overwhelming the quaint nature of Pioneer Park. Preferred a skating pond.
- Are there any liability concerns if someone is injured while ice skating?
- Some cities have closed this type of facility because of cost and lack of interest.

---

liability risk to park users. Multiple independent tree experts were called in to assess the conditions of the 400 South trees and to confirm the City Forester’s evaluation before the decision was made to remove them.

---

Co-Sponsored By

Salt Lake City Council



- Replace the small ice skating rink at Gallivan Center with a larger rink in Pioneer Park / partner with Gallivan on this activity.
- Incorporate Pioneer Park in SLC’s holiday lights celebration; coordinate with Gallivan, Temple Square and Gateway.
- Winter carnival.
- Craft house to be used year-round for organized activities.
- Include a TRAX station at the park to increase public access and use.
- Water feature (similar to seven canyons in Liberty Park, ending in wading pool), will bring families in.
- Offer water activities (e.g., barrels to roll) and pioneer-type games (e.g., hoops, barrels) in the historic playground.
- Year-round farmers market.
- Skatepark to bring adolescents into park.
- Host community-wide multi-day events at the park (similar to the People’s Fair and Taste of Colorado in Denver).
- Create a petting zoo in one corner of park.

vii) **Provide / facilitate activities that build a sense of community**

- Community garden maintained by the homeless population (perhaps as community service project through homeless court), with produce to be used by St. Vincents.
- Concern expressed that produce from community gardens will be stolen.
- Add spectator benches to activity areas (e.g., bocce courts, tennis courts, playgrounds, basketball courts).
- Add barbeque pits at activity areas throughout the park to encourage family gatherings.
- Consider smaller pavilions throughout the park, instead of one large one.
- Provide lunch/picnic facilities in the gardens.
- Provide tables with chess and checkers.

viii) **Facilitate / maintain free movement through the park**

- Bury electric power boxes.
- Maintain sense of openness.
- Crossways are important.
- Circulation paths help to connect the various areas of the park; “great lawn” should not be a dividing feature.
- Reorient main access to park to create traffic calming effect.
- Layout of park in current design plans is “formal” looking; preference expressed for something more “meandering” – suggestions:

---

Co-Sponsored By

Salt Lake City Council



- NYC Central Park model (some civilized and some “wild” areas)
- Semi-formal Japanese garden
- It should feel like a park, not a “town square”.

ix) **Upgrade / develop the south side of the park (along 400 South)**

- 400 South entry to park is not welcoming.
- South side of park not focused on adequately in design plans.
- Encourage free flow of pedestrian traffic from south side of park to retail businesses on south side of 400 South, perhaps with crosswalk across 400 South between 300 and 400 West.

x) **Improvements specific to the Farmers Market**

- Improve access into park by vehicles from 300 and 400 West, with an immediate need for truck access from 300 West.
- Compacted gravel area at center of park.

xi) **Comments about specific design components**

- **Bathrooms**

- Move bathrooms, possibly to the edges of the park.
- Locate bathrooms to ensure visibility and easy police access.
- Design bathrooms to ensure privacy / personal security while inside.
- Make them lockable.
- Control access to key via café or other staffed facility.
- Alarm system / smoke detector within bathrooms to alert police to illegal activity (e.g., smoking crack).
- Locating bathrooms near activity area (e.g., café) should increase safety.
- Don’t remove bathrooms altogether, as bathroom activities will move into the neighborhood streets and doorways.
- Require area businesses to provide public access to their bathrooms.

- **Great lawn**

- Establish a wide east/west access through the park across the “great lawn,” wide enough for trucks accessing the farmer’s market.

---

Co-Sponsored By

Salt Lake City Council



- Place compacted gravel at the top of the berm that outlines the “great lawn” area; can also be used as walkways and truck access.
- Consider needs for lighting (e.g., concerts / maybe old-fashioned looking street lamps, angle of evening sun).
- **Pavilion/Café**
  - Include a covered seating area with movable chairs.
  - Include a café concession in the pavilion to draw visitors to the park and provide ongoing deterrence to illegal activity. Concern expressed that a pavilion alone will create a “safe harbor” for potentially illicit activity.
  - Allow and encourage cart vendors in the park during the lunch hour.
  - Include water fountains and hand-washing stations at the pavilion.
  - Include a cooking demonstration area at the pavilion.
  - Include a movable or permanent stage area with backstage amenities to provide space for presentations.
  - Include multi-stall bathrooms with limited access.
  - Sheltered area to hold classes – older people teaching younger ones; maybe a senior gathering place.
  - Ethnic bakeries/eateries in pavilion.
  - Will need to provide security so that café does not get broken into.
- **Volleyball court**
  - Remove sand-based volleyball court; needles disposed of in the sand make courts unusable.
- **Basketball and tennis courts**
  - Basketball courts get very little use.
  - Access to these activities should be restricted for the intended use.
- **Bocce courts**
  - Not used often.
  - Install benches for watching.
- **Playground**
  - Combine playground and pavilion; build them at the same time.

---

Co-Sponsored By

Salt Lake City Council



- **Historic walkway**
  - Needs to be beautifully landscaped, not just plaques.
  - Walkway should be designed with year-round use in mind, as gardens will not be beautiful year-round.
  
- **Maintenance**
  - Any design feature should include plans and provisions for maintenance.
  - Concern expressed about unattended plaques being installed in the park (possibility they will be defaced).

---

Co-Sponsored By

**Salt Lake City Council**



## Appendix 1

### Pioneer Park Public Workshop

Friday, December 5, 2008 -- 9 am – noon  
Gallivan Center, Center Stage Conference Room

### AGENDA

9:00 – 9:30 Office	Welcome and Introductions	Luke Garrott, City Council Joyce P. Valdez, Mayor's
9:30 – 10:00	Historical Context	Rick Graham, Public Services
10:00 – 11:00	Small Group Discussions	
11:00 – 11:40	Plenary – Report Back	
11:40 – 11:55	Prioritization of Design Components	
11:55 – 12:00	Closing Remarks	Luke Garrott, City Council

---

Co-Sponsored By

Salt Lake City Council



## Appendix 2

### Pioneer Park Public Workshop

Friday, December 5, 2008 -- 9 am – noon  
Gallivan Center, Center Stage Conference Room

#### Workshop Participants

Name	Affiliation	Attended 12/5 Workshop	Other Participation
<b>Residents Near Pioneer Park</b>			
Abigail Anderson		XX	
Rebecca Bingham		XX	
Janie Culley		XX	
Christian Harrison	Downtown Community Council	XX	
Michael Hatch		XX	
Lindsey Morris		XX	
Luann Lakis	Downtown Community Council	XX	
Mickelle Weber		XX	
Edward Whitney		XX	
<b>Businesses Near Pioneer Park</b>			
Pete Henderson	Rio Grande Café	XX	
Cindy Kindred	Vanguard Media Group	XX	
Jim Rosinus	Sam Wellers Bookstore	XX	
<b>Downtown Community Beyond Pioneer Park</b>			
Noel Anderson	Freedom of Expression Vendors		e-mail prioritization
Kim Angeli	Downtown Alliance	XX	
Babs DeLay	Urban Utah, Planning Commission	XX	
Chris Gamvroulas	Holy Trinity Greek Orthodox Church		e-mail prioritization
Ken Millo	Allen Millo Associates		e-mail correspondence
Camille Winnie	Downtown Alliance	XX	
<b>Salt Lake City Municipal Corporation</b>			
Michelle Ross	SL Police Department	XX	
Jill Wilkerson-Smith	RDA	XX	
<b>Homeless Community</b>			
Allan Ainsworth	Fourth Street Clinic	XX	
Jose Lazaro	Catholic Community Services	XX	
Matt Minkevitch	The Road Home	XX	
Ed Snoddy	Volunteers of America		e-mail prioritization
Residents	The Road Home		12/30/08 workshop

Co-Sponsored By

**Salt Lake City Council**



Greater SLC Community			
Bette Barton	Daughters of Utah Pioneers	xx	
Jonathan Morrison	SLC Bike Collective	xx	
Maurine Smith	Daughters of Utah Pioneers	xx	
Gwen Springmeyer	Greater Avenues Community Council	xx	
Angie Vorher	Jordan Meadows Community Council	xx	

Observers			
Luke Garrott	Salt Lake City Councilman	xx	
Rick Graham	SLC Public Works	xx	
Karen Hale	SLC Mayor's Office, Communications Director	xx	
Lisa Harrison	SLC Mayor's Office, community liaison	xx	
Esther Hunter	SLC Mayor's Office	xx	
Molly Jones	SLC Mayor's Office, intern		
Nick Tarbet	SLC Council, constituent liaison	xx	
Joyce P. Valdez	SLC Mayor's Office, community liaison	xx	

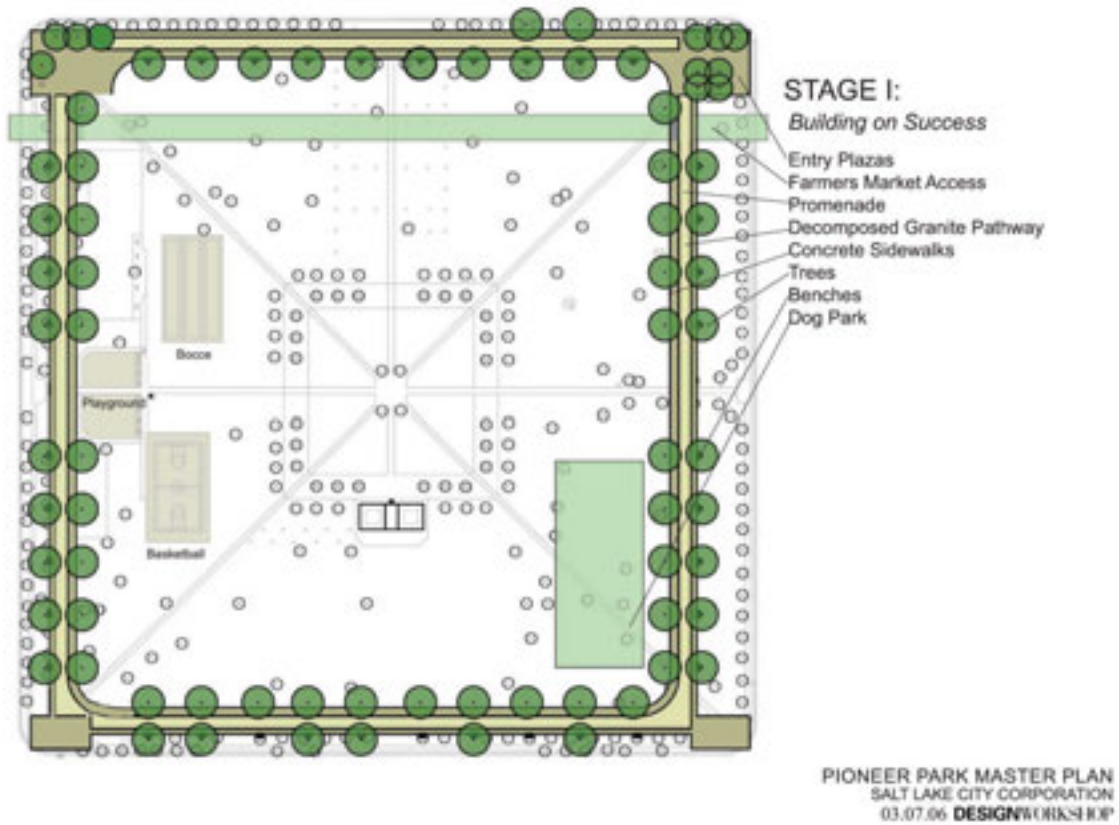
Facilitators			
Mary De La Mare-Schaefer	SLC Community & Economic Development	xx	
Debbie Feder	S.J. Quinney College of Law, Mediation Clinic	xx	
Frank Gray	SLC Community & Economic Development	xx	
Carri Hulet	The Langdon Group	xx	
Nancy McGahey	Utah Dispute Resolution	xx	
Michele Straube	Salt Lake Solutions	xx	

Co-Sponsored By

Salt Lake City Council



### Appendix 3 Pioneer Park Drawings Stages I, II, III

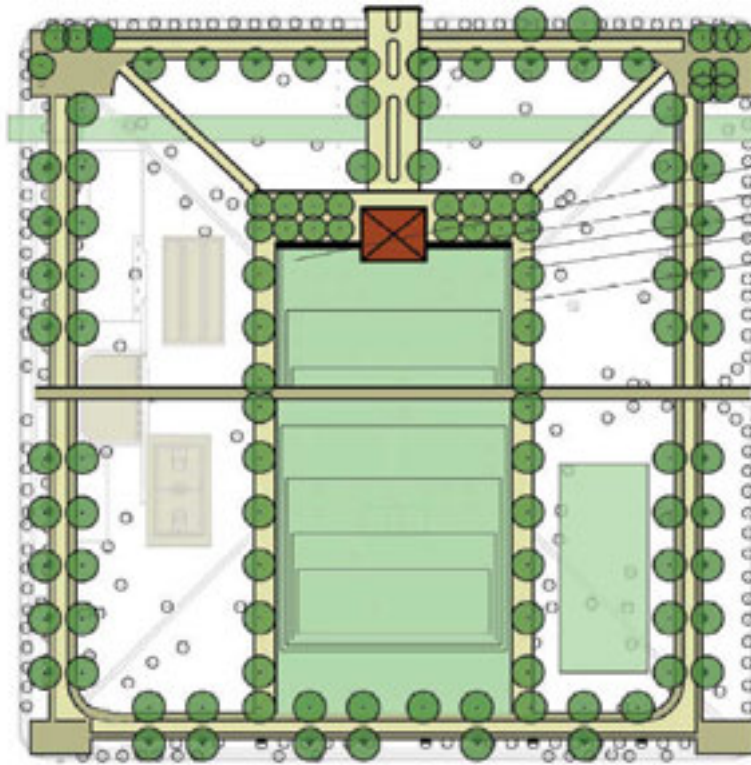


Stage 1 construction was completed in 2008.

Co-Sponsored By

Salt Lake City Council





**STAGE II:**  
*Changing Patterns of Use*

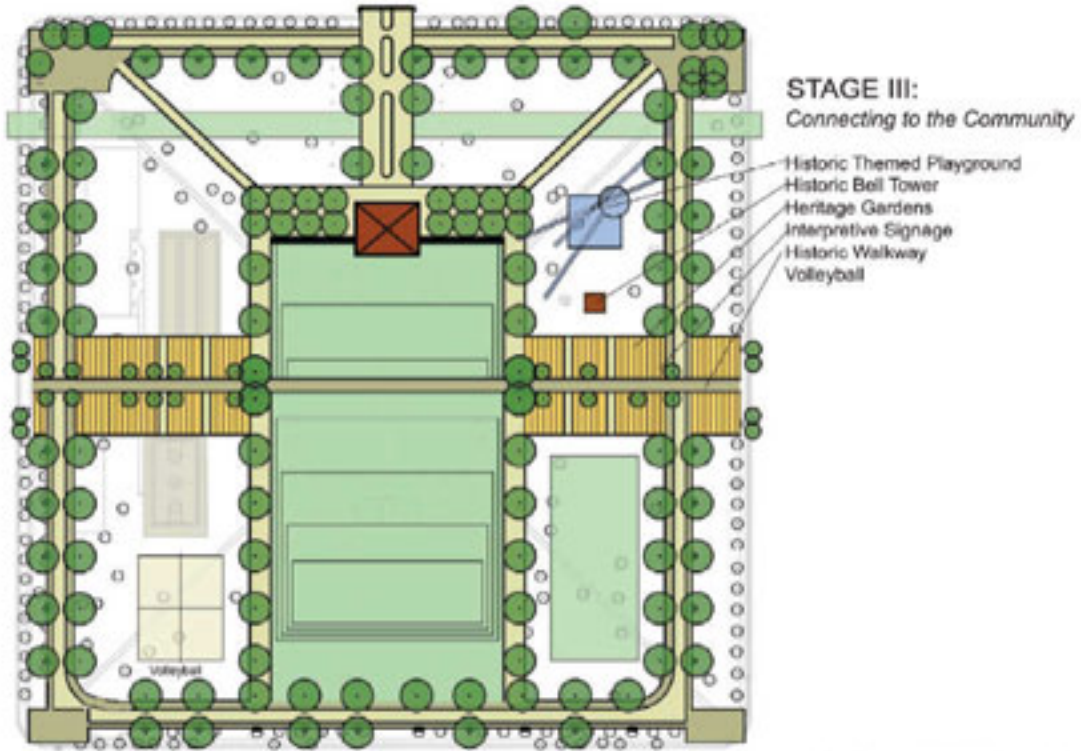
- Great Lawn
- Café/ Stage/ Restrooms
- Tables and Chairs
- Trees
- Circulation Paths

PIONEER PARK MASTER PLAN  
SALT LAKE CITY CORPORATION  
03.07.06 DESIGN WORKSHOP

Co-Sponsored By

**Salt Lake City Council**





**STAGE III:**  
Connecting to the Community

- Historic Themed Playground
- Historic Bell Tower
- Heritage Gardens
- Interpretive Signage
- Historic Walkway
- Volleyball

PIONEER PARK MASTER PLAN  
SALT LAKE CITY CORPORATION  
03.07.06 **DESIGNWORKSHOP**

Co-Sponsored By

Salt Lake City Council



## Appendix 4

### Pioneer Park Public Workshop

Friday, December 5, 2008 -- 9 am – noon  
Gallivan Center, Center Stage Conference Room

### Individual Design Components

(Basis for Prioritization)

Great Lawn (Phase 2 Plans)		
Gold Star – Top Priority Item	Green Dot – High Priority Item	Red Dot – Do Not Build

Café / Stage / Restrooms (Phase 2 Plans)		
Gold Star – Top Priority Item	Green Dot – High Priority Item	Red Dot – Do Not Build

Moveable Gathering / Picnic Areas (Phase 2 Plans)		
Gold Star – Top Priority Item	Green Dot – High Priority Item	Red Dot – Do Not Build

---

Co-Sponsored By

Salt Lake City Council



## Fixed Location Gathering / Picnic Areas (Phase 2 Plans)

Gold Star – Top Priority Item	Green Dot – High Priority Item	Red Dot – Do Not Build

## Trees (Phase 2 Plans)

Gold Star – Top Priority Item	Green Dot – High Priority Item	Red Dot – Do Not Build

## Circulation Paths (Phase 2 Plans)

Gold Star – Top Priority Item	Green Dot – High Priority Item	Red Dot – Do Not Build

## Historic Themed Playground (Phase 3 Plans)

Gold Star – Top Priority Item	Green Dot – High Priority Item	Red Dot – Do Not Build

---

Co-Sponsored By

**Salt Lake City Council**



### Historic Bell Tower (Phase 3 Plans)

Gold Star – Top Priority Item	Green Dot – High Priority Item	Red Dot – Do Not Build

### Heritage Gardens (Phase 3 Plans)

Gold Star – Top Priority Item	Green Dot – High Priority Item	Red Dot – Do Not Build

### Interpretive Signage (Phase 3 Plans)

Gold Star – Top Priority Item	Green Dot – High Priority Item	Red Dot – Do Not Build

### Historic Walkway (Phase 3 Plans)

Gold Star – Top Priority Item	Green Dot – High Priority Item	Red Dot – Do Not Build

---

Co-Sponsored By

**Salt Lake City Council**



### Volleyball, Basketball, Tennis (Phase 3 Plans)

Gold Star – Top Priority Item	Green Dot – High Priority Item	Red Dot – Do Not Build

### Bury Existing Power Boxes (New)

Gold Star – Top Priority Item	Green Dot – High Priority Item	Red Dot – Do Not Build

### Bathrooms – Remove or Move to Perimeter (New)

Gold Star – Top Priority Item	Green Dot – High Priority Item	Red Dot – Do Not Build

### [Removable] Ice Skating Rink / Summer Activity (New)

Gold Star – Top Priority Item	Green Dot – High Priority Item	Red Dot – Do Not Build

---

Co-Sponsored By

**Salt Lake City Council**



### Community Garden Plots (New)

Community Garden Plots (New)		
Gold Star – Top Priority Item	Green Dot – High Priority Item	Red Dot – Do Not Build

### More Lighting (New)

More Lighting (New)		
Gold Star – Top Priority Item	Green Dot – High Priority Item	Red Dot – Do Not Build

### South Side of Park – Develop and Access (New)

South Side of Park – Develop and Access (New)		
Gold Star – Top Priority Item	Green Dot – High Priority Item	Red Dot – Do Not Build

### Police Substation (New)

Police Substation (New)		
Gold Star – Top Priority Item	Green Dot – High Priority Item	Red Dot – Do Not Build

---

Co-Sponsored By

**Salt Lake City Council**



### Adolescent – Teenage Youth Activity (New)

Gold Star – Top Priority Item	Green Dot – High Priority Item	Red Dot – Do Not Build

### Farmers Market Access into and out of Park (New)

Gold Star – Top Priority Item	Green Dot – High Priority Item	Red Dot – Do Not Build

---

Co-Sponsored By

**Salt Lake City Council**



**Appendix 5**  
**Pioneer Park Public Workshop**  
 Friday, December 5, 2008 -- 9 am – noon  
 Gallivan Center, Center Stage Conference Room

**Prioritization Votes**

<b>Design Component</b>	<b>Top Priority (gold star)</b>	<b>High Priority (green dot)</b>	<b>Do Not Build (red dot)</b>	<b>The Road Home (choose top 5 only)</b>
Great Lawn (Phase 2)	1	7	2	
Café / Stage / Restrooms (Phase 2)	6	10	1	3
Moveable Gathering / Picnic Areas (Phase 2)	1	2	1	1
Fixed Location Gathering / Picnic Areas (Phase 2)		3		
Trees (Phase 2)	1	2	1	1
Circulation Paths (Phase 2)		4	1	1
Historic Themed Playground (Phase 3)		1	11 1 (build later)	
Historic Bell Tower (Phase 3)		2	7	
Heritage Gardens (Phase 3)		4	7	1
Interpretive Signage (Phase 3)	1	3	6	
Historic Walkway (Phase 3)	2	4	3	
Volleyball, Basketball, Tennis (Phase 3)		2	4 1 (build later)	1
Bury Existing Power Boxes (new)		5	3 1 (build later)	1

Co-Sponsored By

**Salt Lake City Council**



<b>Design Component</b>	<b>Top Priority (gold star)</b>	<b>High Priority (green dot)</b>	<b>Do Not Build (red dot)</b>	<b>The Road Home (choose top 5 only)</b>
Bathrooms – Remove or Move to Perimeter (new)	1	8	2	3
[Removable] Ice Skating Rink / Summer Activity (new)	6	9	6	1
Community Garden Plots (new)	1	2	11 1 (build later)	1
More Lighting (new)		5		2
South Side of Park – Develop and Access (new)	1	5	2	1
Police Substation (new)	1	10	1	1
Adolescent – Teenage Youth Activity Option (new)		2	12	1
Farmers Market Access into and out of Park (new)	4	6	1	1

---

Co-Sponsored By

**Salt Lake City Council**

